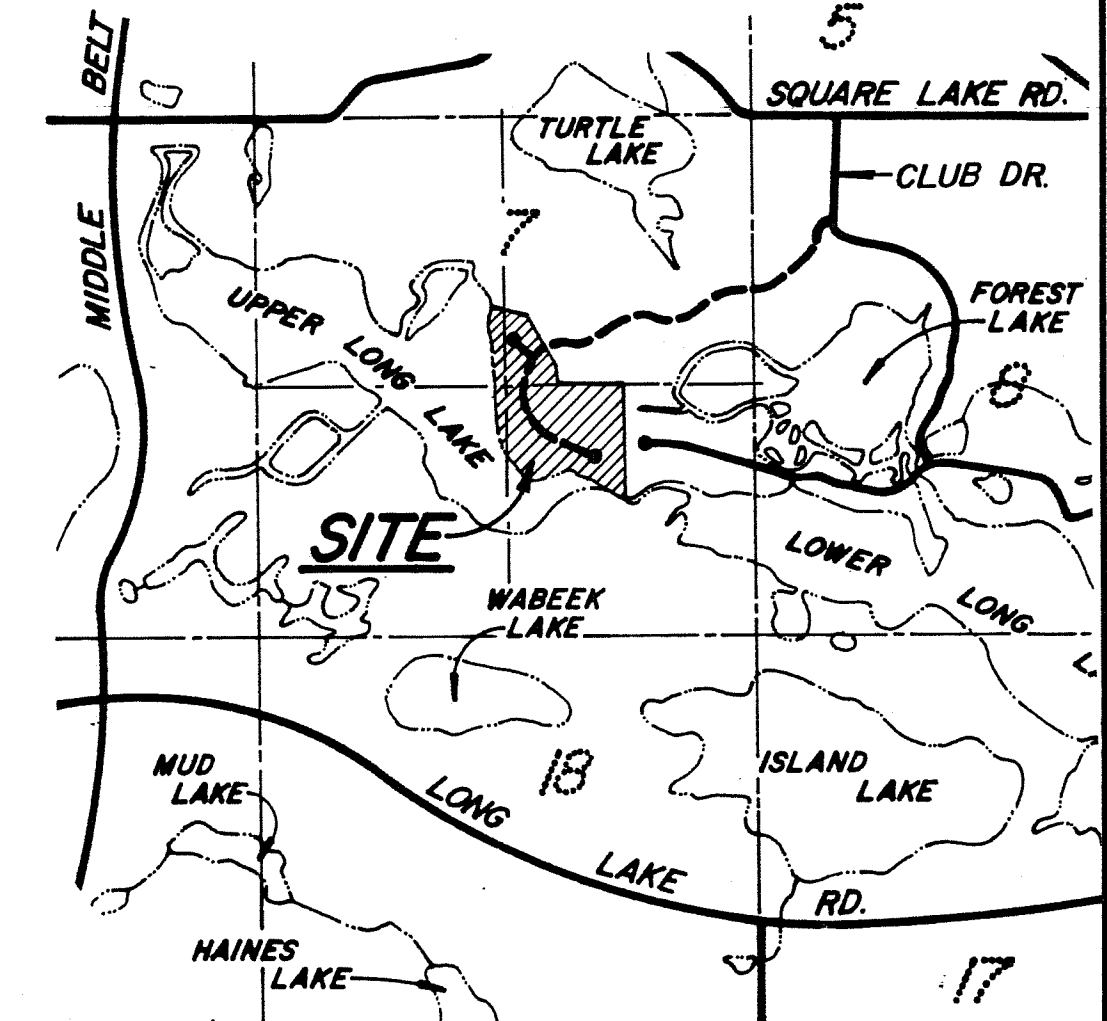
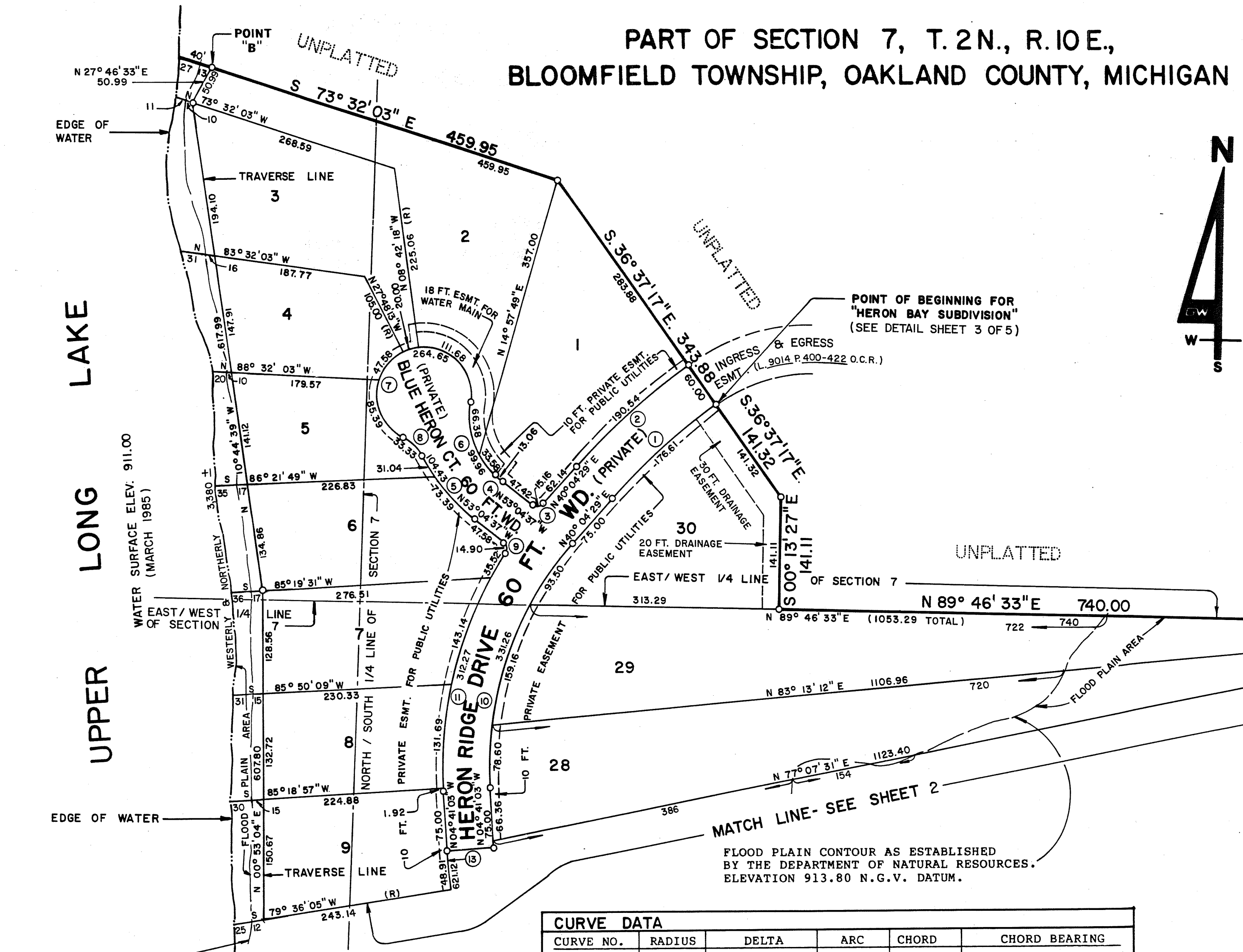
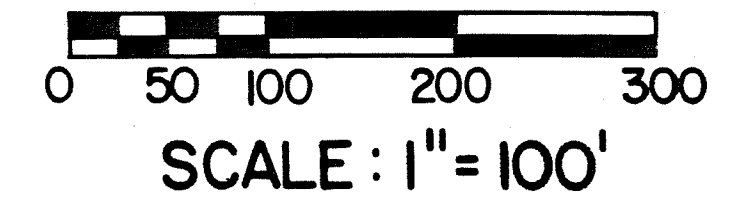


85-139985

# HERON BAY SUBDIVISION

PART OF SECTION 7, T.2N., R.10E.,  
BLOOMFIELD TOWNSHIP, OAKLAND COUNTY, MICHIGAN



**LOCATION MAP**  
SCALE: 1" = 2000'

**LEGEND**

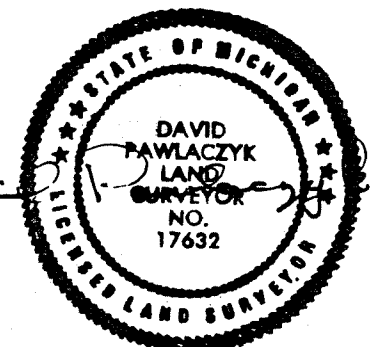
1. ALL DIMENSIONS ARE IN FEET.
2. ALL CURVE DIMENSIONS ARE ARC MEASUREMENTS.
3. CONCRETE MONUMENTS HAVE BEEN PLACED AT ALL POINTS MARKED "O".
4. LOT CORNERS HAVE BEEN MARKED WITH 18 INCH IRON BARS, 1/2 INCH IN DIAMETER.
5. BEARINGS ESTABLISHED FROM THE EAST LINE OF "WABEEK MANOR", LIBER 146, PAGES 1-4, OAKLAND COUNTY RECORDS.
6. (R) DENOTES A RADIAL LOT LINE.  $\perp$  DENOTES 90° ANGLE.

THIS IS SUBJECT TO RESTRICTIONS, AS REQUIRED BY ACT 288 OF 1967, AS AMENDED ON CERTAIN LOTS WITH RESPECT TO THE REQUIREMENTS OF THE MICHIGAN DEPARTMENT OF NATURAL RESOURCES AND/OR THE MICHIGAN DEPARTMENT OF PUBLIC HEALTH, WHICH ARE RECORDED IN LIBER 9180, PAGES 540-569 INCL. OF RECORDS OF THIS COUNTY.

FLOOD PLAIN CONTOUR AS ESTABLISHED BY THE DEPARTMENT OF NATURAL RESOURCES. ELEVATION 913.80 N.G.V. DATUM.

FLOOD PLAIN CONTOUR AS ESTABLISHED BY THE DEPARTMENT OF NATURAL RESOURCES. ELEVATION 913.80 N.G.V. DATUM.

CURVE DATA					
CURVE NO.	RADIUS	DELTA	ARC	CHORD	CHORD BEARING
1	760.59	13° 18' 14"	176.61	176.21	N. 46° 43' 36" E.
2	820.59	13° 18' 14"	190.54	190.11	N. 46° 43' 36" E.
3	10.00	86° 50' 54"	15.16	13.75	N. 83° 29' 56" E.
4	200.00	03° 44' 26"	13.06	13.05	N. 51° 12' 24" W.
5	260.00	23° 00' 49"	104.43	103.73	N. 41° 34' 12" W.
6	100.00	57° 16' 26"	99.96	95.85	N. 20° 41' 58" W.
7	60.00	252° 43' 24"	264.65	96.64	N. 61° 34' 37" E.
8	55.00	34° 43' 12"	33.33	32.82	N. 47° 25' 24" W.
9	10.00	85° 21' 22"	14.90	13.56	N. 10° 23' 56" W.
10	424.04	44° 45' 32"	331.26	322.90	N. 17° 41' 43" E.
11	484.04	36° 57' 48"	312.27	306.88	N. 13° 47' 51" E.
13	490.39	72° 34' 10"	621.12	580.42	N. 40° 58' 08" W.

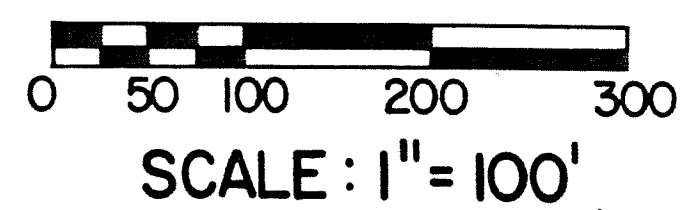
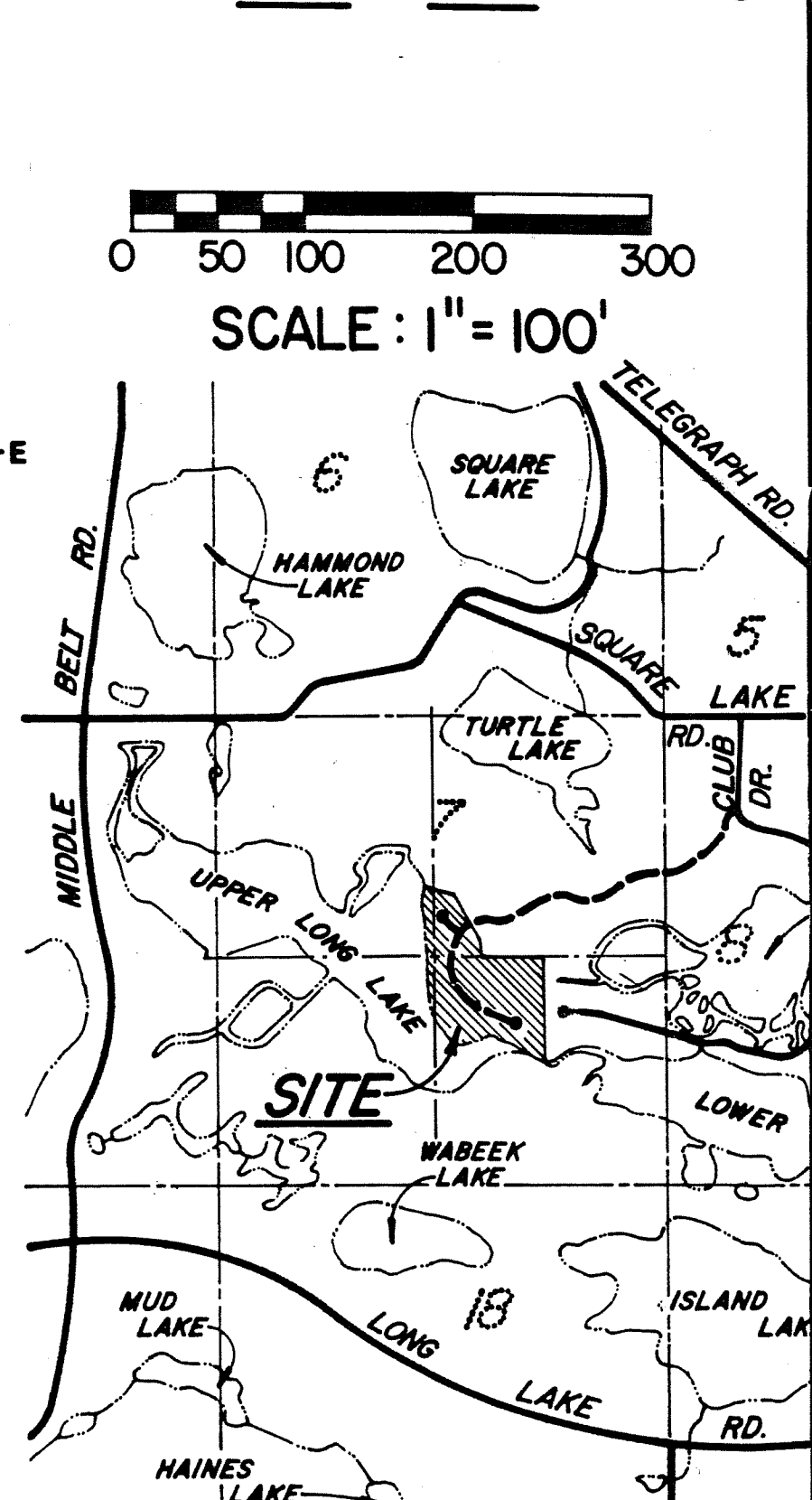
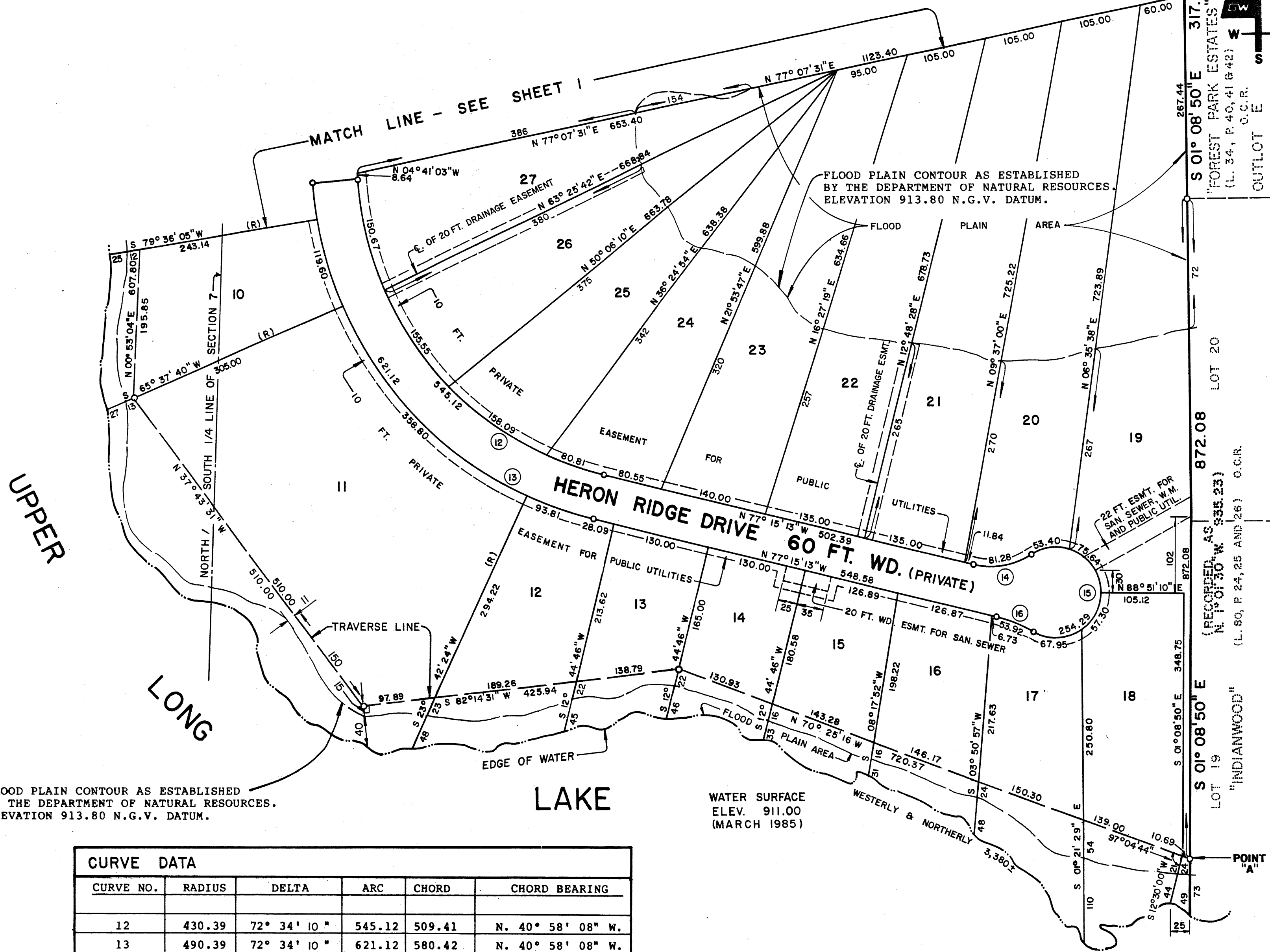


Restrictions As To Lot 19 - Liber 10638 - Pg 243-249

**GWE**  
Giffels-Webster Engineers, Inc.  
CONSULTING ENGINEERS, LAND SURVEYORS & PLANNERS  
2731 Adams Road • Pontiac, Michigan 48057  
Phone: 313/852-3100 or 313/358-2286  
FLORIDA MICHIGAN TEXAS

# HERON BAY SUBDIVISION

PART OF SECTION 7, T.2N., R.10E.,  
BLOOMFIELD TOWNSHIP, OAKLAND COUNTY, MICHIGAN



**LOCATION MAP**  
SCALE: 1" = 2000'

- LEGEND**
1. ALL DIMENSIONS ARE IN FEET.
  2. ALL CURVE DIMENSIONS ARE ARC MEASUREMENTS.
  3. CONCRETE MONUMENTS HAVE BEEN PLACED AT ALL POINTS MARKED "O".
  4. LOT CORNERS HAVE BEEN MARKED WITH 18 INCH IRON BARS, 1/2 INCH IN DIAMETER.
  5. BEARINGS ESTABLISHED FROM THE EAST LINE OF "WABEEK MANOR", LIBER 146, PAGES 1-4, OAKLAND COUNTY RECORDS.
  6. (R) DENOTES A RADIAL LOT LINE.  
L DENOTES 90° ANGLE.

FLOOD PLAIN CONTOUR AS ESTABLISHED BY THE DEPARTMENT OF NATURAL RESOURCES. ELEVATION 913.80 N.G.V. DATUM.

WATER SURFACE ELEV. 911.00 (MARCH 1985)

CURVE DATA					
CURVE NO.	RADIUS	DELTA	ARC	CHORD	CHORD BEARING
12	430.39	72° 34' 10"	545.12	509.41	N. 40° 58' 08" W.
13	490.39	72° 34' 10"	621.12	580.42	N. 40° 58' 08" W.
14	100.00	46° 34' 03"	81.28	79.06	N. 79° 27' 46" E.
15	60.00	242° 49' 40"	254.29	102.41	N. 02° 24' 26" W.
16	190.00	16° 15' 37"	53.92	53.74	N. 69° 07' 25" W.

THIS IS SUBJECT TO RESTRICTIONS, AS REQUIRED BY ACT 288 OF 1967, AS AMENDED ON CERTAIN LOTS WITH RESPECT TO THE REQUIREMENTS OF THE MICHIGAN DEPARTMENT OF NATURAL RESOURCES AND/OR THE MICHIGAN DEPARTMENT OF PUBLIC HEALTH, WHICH ARE RECORDED IN LIBER 9180, PAGES 540-569 INCL. OF RECORDS OF THIS COUNTY.



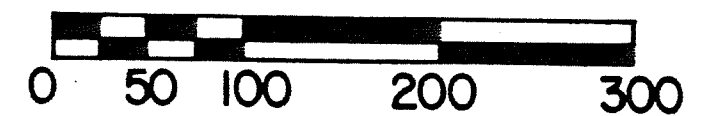
**GWE** Giffels-Webster Engineers, Inc.  
CONSULTING ENGINEERS, LAND SURVEYORS & PLANNERS  
2731 Adams Road • Pontiac, Michigan 48057  
Phone: 313/862-3100 or 313/568-2286  
ARIZONA FLORIDA MICHIGAN TEXAS

# HERON BAY SUBDIVISION

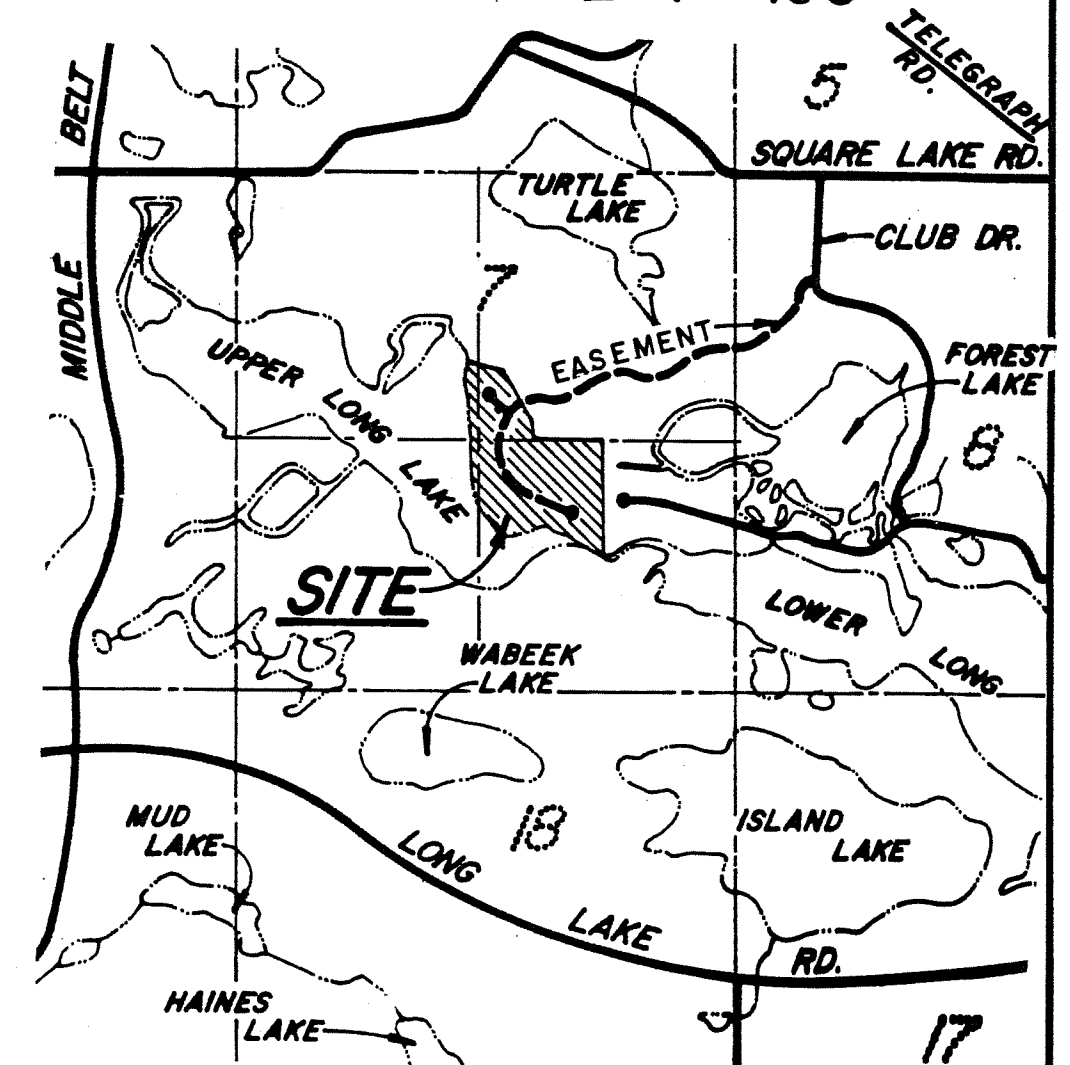
PART OF SECTION 7, T. 2 N., R. 10 E.,  
BLOOMFIELD TOWNSHIP, OAKLAND COUNTY, MICHIGAN

## DETAIL SHEET INGRESS & EGRESS EASEMENTS

AS RECORDED IN LIBER 9129, PAGES 611-626 & LIBER 9014, PAGES 400-422  
OAKLAND COUNTY RECORDS

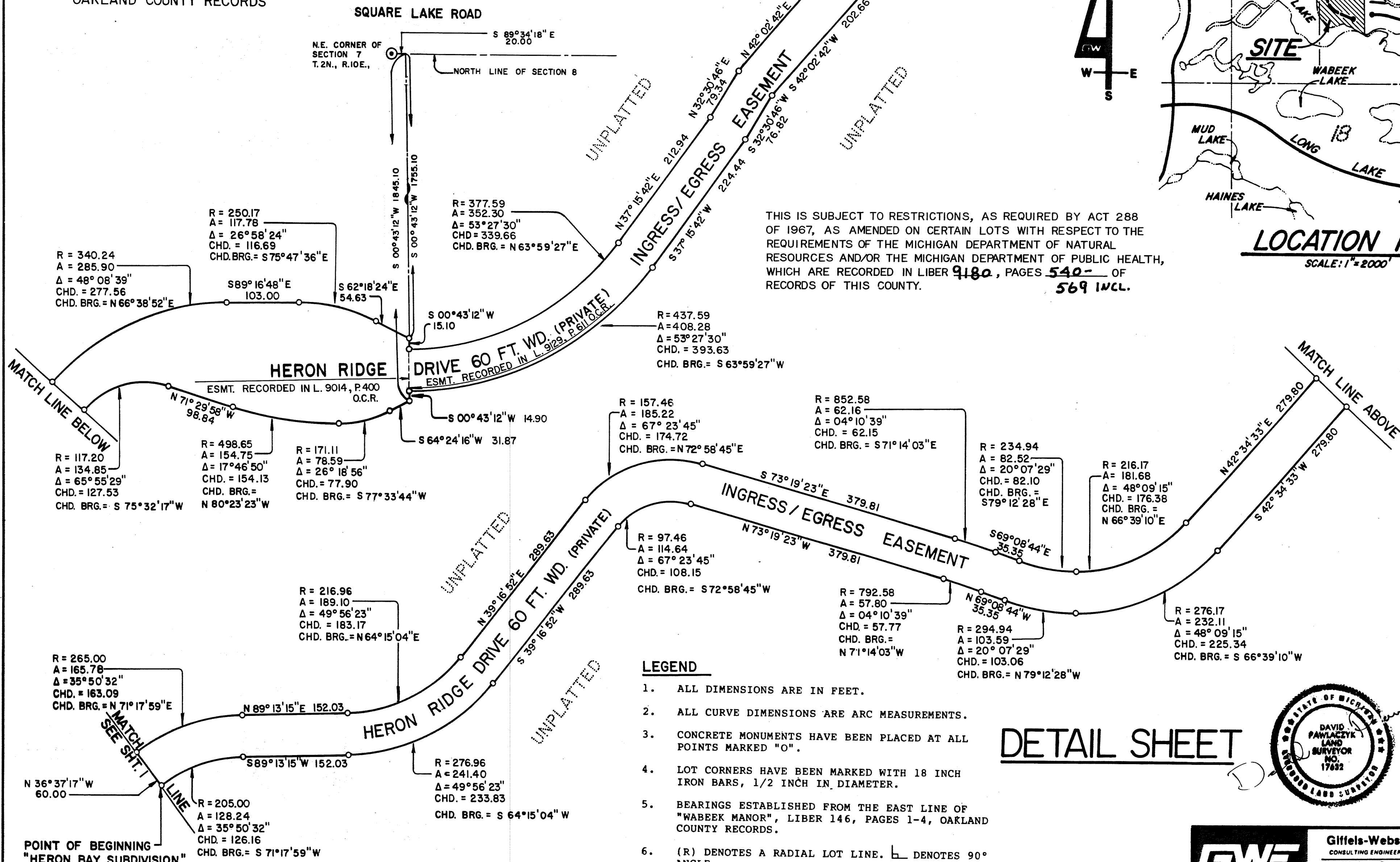


SCALE: 1" = 100'



LOCATION MAP

SCALE: 1" = 2000'

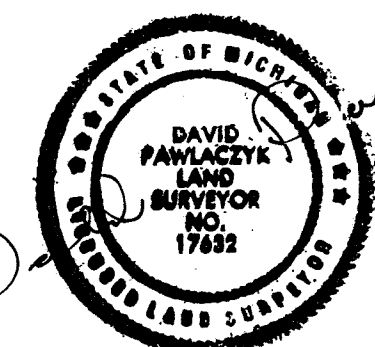


THIS IS SUBJECT TO RESTRICTIONS, AS REQUIRED BY ACT 288 OF 1967, AS AMENDED ON CERTAIN LOTS WITH RESPECT TO THE REQUIREMENTS OF THE MICHIGAN DEPARTMENT OF NATURAL RESOURCES AND/OR THE MICHIGAN DEPARTMENT OF PUBLIC HEALTH, WHICH ARE RECORDED IN LIBER 9180, PAGES 540-569 INCL.

### LEGEND

1. ALL DIMENSIONS ARE IN FEET.
2. ALL CURVE DIMENSIONS ARE ARC MEASUREMENTS.
3. CONCRETE MONUMENTS HAVE BEEN PLACED AT ALL POINTS MARKED "O".
4. LOT CORNERS HAVE BEEN MARKED WITH 18 INCH IRON BARS, 1/2 INCH IN DIAMETER.
5. BEARINGS ESTABLISHED FROM THE EAST LINE OF "WABEEK MANOR", LIBER 146, PAGES 1-4, OAKLAND COUNTY RECORDS.
6. (R) DENOTES A RADIAL LOT LINE.  $\perp$  DENOTES 90° ANGLE.

## DETAIL SHEET



Giffels-Webster Engineers, Inc.  
CONSULTING ENGINEERS, LAND SURVEYORS & PLANNERS  
2731 Adams Road • Pontiac, Michigan 48057  
Phone: 313/852-3100 or 313/268-2286  
FLORIDA MICHIGAN TEXAS



# HERON BAY SUBDIVISION

PART OF SECTION 7, T.2N., R.10E.,  
BLOOMFIELD TOWNSHIP, OAKLAND COUNTY, MICHIGAN

SURVEYOR'S CERTIFICATE:

I, DAVID PAWLACZYK, SURVEYOR, CERTIFY THAT I HAVE SURVEYED, DIVIDED AND MAPPED THE LAND ON THIS PLAT, DESCRIBED AS FOLLOWS: "HERON BAY SUBDIVISION", A PART OF SECTION 7, T-2-N., R-10-E., BLOOMFIELD TOWNSHIP, OAKLAND COUNTY, MICHIGAN, MORE PARTICULARLY DESCRIBED AS: COMMENCING AT THE NORTHEAST CORNER OF SAID SECTION 7; THENCE S. 89° 34' 18" E., 20.00 FEET ALONG SQUARE LAKE ROAD AND FOLLOWING THE NORTH LINE OF SECTION 8; THENCE S. 00° 43' 12" W., 1,845.10 FEET; THENCE S. 64° 24' 16" W., 31.87 FEET; THENCE ALONG A CURVE TO THE RIGHT 78.59 FEET, SAID CURVE HAVING A RADIUS OF 171.11 FEET, CENTRAL ANGLE OF 26° 18' 56" AND LONG CHORD BEARING OF S. 77° 33' 44" W., 77.90 FEET TO A POINT OF COMPOUND CURVATURE; THENCE ALONG A CURVE TO THE RIGHT 154.75 FEET, SAID CURVE HAVING A RADIUS OF 498.65 FEET, CENTRAL ANGLE OF 17° 46' 50" AND LONG CHORD BEARING OF N. 80° 23' 23" W., 154.13 FEET; THENCE N. 71° 29' 58" W., 98.84 FEET; THENCE ALONG A CURVE TO THE LEFT 134.85 FEET, SAID CURVE HAVING A RADIUS OF 117.20 FEET, CENTRAL ANGLE OF 65° 55' 29" AND LONG CHORD BEARING OF S. 75° 32' 17" W., 127.53 FEET; THENCE S. 42° 34' 33" W., 279.80 FEET; THENCE ALONG A CURVE TO THE RIGHT 232.11 FEET, SAID CURVE HAVING A RADIUS OF 276.17 FEET, CENTRAL ANGLE OF 48° 09' 15" AND LONG CHORD BEARING OF S. 66° 39' 10" W., 225.34 FEET TO A POINT OF COMPOUND CURVATURE; THENCE ALONG A CURVE TO THE RIGHT 103.59 FEET, SAID CURVE HAVING A RADIUS OF 294.94 FEET, CENTRAL ANGLE OF 20° 07' 29" AND LONG CHORD BEARING OF N. 79° 12' 28" W., 103.06 FEET; THENCE N. 69° 08' 44" W., 35.35 FEET; THENCE ALONG A CURVE TO THE LEFT 57.80 FEET, SAID CURVE HAVING A RADIUS OF 792.58 FEET, CENTRAL ANGLE OF 04° 10' 39" AND LONG CHORD BEARING OF N. 71° 14' 03" W., 57.77 FEET; THENCE N. 73° 19' 23" W., 379.81 FEET; THENCE ALONG A CURVE TO THE LEFT 114.64 FEET, SAID CURVE HAVING A RADIUS OF 97.46 FEET, CENTRAL ANGLE OF 67° 23' 45" AND LONG CHORD BEARING OF S. 72° 58' 45" W., 108.15 FEET; THENCE S. 39° 16' 52" W., 289.63 FEET; THENCE ALONG A CURVE TO THE RIGHT 241.40 FEET, SAID CURVE HAVING A RADIUS OF 276.96 FEET, CENTRAL ANGLE OF 49° 56' 23" AND LONG CHORD BEARING OF S. 64° 15' 04" W., 233.83 FEET; THENCE S. 89° 13' 15" W., 152.03 FEET; THENCE ALONG A CURVE TO THE LEFT 128.24 FEET, SAID CURVE HAVING A RADIUS OF 205.00 FEET, CENTRAL ANGLE OF 35° 50' 32" AND LONG CHORD BEARING OF S. 71° 17' 59" W., 126.16 FEET TO THE POINT OF BEGINNING FOR "HERON BAY SUBDIVISION"; THENCE S. 36° 37' 17" E., 141.32 FEET; THENCE S. 00° 13' 27" E., 141.11 FEET TO A POINT ON THE EAST/WEST 1/4 LINE OF SECTION 7; THENCE N. 89° 46' 33" E., 740.00 FEET ALONG SAID LINE TO THE S.W. CORNER OF LOT 27, "FOREST PARK ESTATES" AS RECORDED IN LIBER 34, PAGE 40, 41 AND 42 OF PLATS, OAKLAND CO. RECORDS; THENCE S. 01° 08' 50" E., 317.44 FEET TO THE NORTHWEST CORNER OF "INDIANWOOD" AS RECORDED IN LIBER 80, PAGE 24, 25 AND 26 OF PLATS, OAKLAND COUNTY RECORDS; THENCE ALONG THE WEST LINE OF SAID "INDIANWOOD" S. 01° 08' 50" E., 872.08 FEET TO A POINT "A"; THENCE

CONTINUING S. 01° 08' 50" E., 73 FEET TO A POINT ON THE WATERS EDGE OF UPPER LONG LAKE; THENCE WESTERLY AND NORTHERLY ALONG SAID WATERS EDGE 3,380 FEET MORE OR LESS; THENCE S. 73° 32' 03" E., 40 FEET TO A POINT "B", THE SHORE OF SAID LAKE BEING TRAVERSED BY A LINE DESCRIBED AS BEGINNING AT POINT "A"; THENCE N. 70° 25' 16" W., 720.37 FEET; THENCE S. 82° 14' 31" W., 425.94 FEET; THENCE N. 37° 43' 31" W., 510.00 FEET; THENCE N. 00° 53' 04" E., 607.80 FEET; THENCE N. 10° 44' 39" W., 617.99 FEET; THENCE N. 27° 46' 33" E., 50.99 FEET; TO POINT "B" BEING THE ENDING OF SAID TRAVERSE LINE; THENCE S. 73° 32' 03" E., 459.95 FEET; THENCE S. 36° 37' 17" E., 343.88 FEET TO THE POINT OF BEGINNING AND CONTAINING 43.34 ACRES MORE OR LESS, WHICH INCLUDES 4.10 ACRES MORE OR LESS BETWEEN THE TRAVERSE LINE AS DESCRIBED AND THE WATERS EDGE OF UPPER LONG LAKE, CONTAINING 30 LOTS NUMBERED 1 THROUGH 30.

SUBJECT TO ANY EASEMENTS, RESTRICTIONS OR RIGHTS-OF-WAY, RECORDED OR OTHERWISE.

THAT I HAVE MADE SUCH SURVEY, LAND DIVISION AND PLAT BY THE DIRECTION OF THE OWNERS OF SUCH LAND.

THAT SUCH PLAT IS A CORRECT REPRESENTATION OF ALL THE EXTERIOR BOUNDARIES OF THE LAND SURVEYED AND SUBDIVISION OF IT.

THAT THE REQUIRED MONUMENTS AND LOT MARKERS HAVE BEEN LOCATED IN THE GROUND OR THAT SURETY HAS BEEN DEPOSITED WITH THE MUNICIPALITY, AS REQUIRED BY SECTION 125 OF THE ACT.

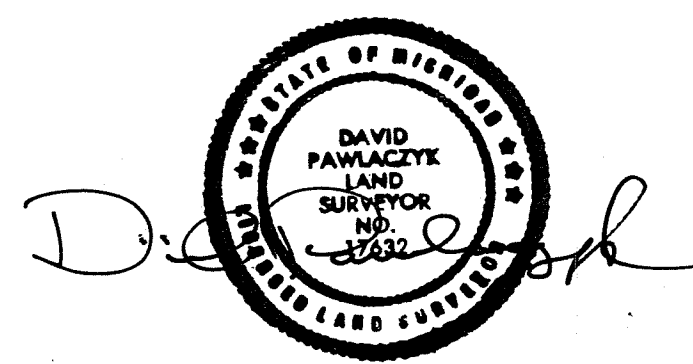
THAT THE ACCURACY OF SURVEY IS WITHIN THE LIMITS REQUIRED BY SECTION 126 OF THE ACT.

THAT THE BEARINGS ON THE PLAT ARE EXPRESSED AS REQUIRED BY SECTION 126 (3) OF THE ACT AND AS EXPLAINED IN THE LEGEND.

DATE: JUNE 11, 1985

GIFFELS-WEBSTER ENGINEERS, INC.  
2731 ADAMS ROAD  
PONTIAC, MICHIGAN 48057

*David Pawlaczyk*  
DAVID PAWLACZYK, R.L.S. #17632  
VICE PRESIDENT / LAND SURVEYING



**GWE**  
Giffels-Webster Engineers, Inc.  
CONSULTING ENGINEERS, LAND SURVEYORS & PLANNERS  
2731 Adams Road • Pontiac, Michigan 48057  
Phone 313/852-3100 or 313/258-2285  
FLORIDA MICHIGAN TEXAS

# HERON BAY SUBDIVISION

## PART OF SECTION 7, T. 2 N., R. 10 E., BLOOMFIELD TOWNSHIP, OAKLAND COUNTY, MICHIGAN

### PROPRIETOR'S CERTIFICATE:

VICTOR INTERNATIONAL CORPORATION, A MICHIGAN CORPORATION, DULY ORGANIZED AND EXISTING UNDER THE LAWS OF THE STATE OF MICHIGAN, BY DAVID V. JOHNSON, PRESIDENT, AS PROPRIETOR, CERTIFY THAT WE HAVE CAUSED THE LAND TO BE SURVEYED, DIVIDED, MAPPED AND DEDICATED AS REPRESENTED ON THIS PLAT, AND THAT  
AND THAT THE PUBLIC UTILITY EASEMENTS ARE PRIVATE EASEMENTS, AND THAT ALL OTHER EASEMENTS ARE FOR THE USES SHOWN ON THE PLAT; AND THAT LOTS 2 THRU 19 INCLUSIVE EXTEND TO THE WATERS EDGE OF UPPER LONG LAKE AS SHOWN ON THIS PLAT.

### WITNESS:

VICTOR INTERNATIONAL CORPORATION  
A MICHIGAN CORPORATION  
31000 LAHSER ROAD  
BIRMINGHAM, MICHIGAN 48010  
Arlene F. Steinman  
ARLENE F. STEINMAN  
Manny Kniahynycky  
MANNY KNIAHYNICKY  
DAVID V. JOHNSON  
PRESIDENT

HERON RIDGE DRIVE & BLUE HERON COURT ARE FOR THE PRIVATE USE OF THE LOT OWNERS OF THIS PLAT

### ACKNOWLEDGEMENT:

STATE OF MICHIGAN )  
OAKLAND COUNTY ) s.s.

PERSONALLY CAME BEFORE ME THIS 17th DAY OF September, 1985, DAVID V. JOHNSON, OF THE ABOVE NAMED CORPORATION, TO ME KNOWN TO BE THE PERSON WHO EXECUTED THE FOREGOING INSTRUMENT AND TO ME KNOWN TO BE SUCH PRESIDENT, OF SAID CORPORATION, AND ACKNOWLEDGED THAT HE EXECUTED THE FOREGOING INSTRUMENT AS SUCH OFFICER AS HIS FREE ACT AND DEED OF SAID CORPORATION BY ITS AUTHORITY.

MY COMMISSION EXPIRES: 2/9/86

Arlene F. Steinman  
NOTARY PUBLIC, ARLENE F. STEINMAN  
OAKLAND COUNTY MICHIGAN

### PROPRIETOR'S CERTIFICATE:

WE, AS PROPRIETORS, CERTIFY THAT WE CAUSED THE LAND EMBRACED IN THIS PLAT TO BE SURVEYED, DIVIDED, MAPPED AND DEDICATED AS REPRESENTED ON THIS PLAT AND THAT  
; THAT THE PUBLIC UTILITY EASEMENTS ARE PRIVATE EASEMENTS AND THAT ALL OTHER EASEMENTS ARE FOR THE USES SHOWN ON THE PLAT; AND THAT LOT 2 THRU 19 INCLUSIVE EXTEND TO THE WATERS EDGE OF UPPER LONG LAKE AS SHOWN ON THIS PLAT.

### WITNESS:

Manny Kniahynycky  
MANNY KNIAHYNICKY  
Shari L. Burgess  
SHARI L. BURGESS  
Maurice Cohen  
MAURICE COHEN  
27700 NORTHWESTERN HIGHWAY  
SOUTHFIELD, MICHIGAN 48037  
Margo Cohen  
MARGO COHEN  
27700 NORTHWESTERN HIGHWAY  
SOUTHFIELD, MICHIGAN 48037  
David V. Johnson  
DAVID V. JOHNSON  
31000 LAHSER ROAD  
BIRMINGHAM, MICHIGAN 48010

HERON RIDGE DRIVE & BLUE HERON COURT ARE FOR THE PRIVATE USE OF THE LOT OWNERS OF THIS PLAT

### ACKNOWLEDGEMENT:

STATE OF MICHIGAN )  
COUNTY OF OAKLAND ) s.s.

PERSONALLY CAME BEFORE ME THIS 17th DAY OF September, 1985, THE ABOVE NAMED MAURICE COHEN AND MARGO COHEN, HIS WIFE, AND DAVID V. JOHNSON, A SINGLE MAN, TO ME KNOWN TO BE THE SAME PERSONS WHO EXECUTED THE FOREGOING INSTRUMENT, AND ACKNOWLEDGED THAT THEY EXECUTED THE SAME AS THEIR FREE ACT AND DEED.

MY COMMISSION EXPIRES: 2/9/86

Arlene F. Steinman  
NOTARY PUBLIC, ARLENE F. STEINMAN  
OAKLAND COUNTY, MICHIGAN

### PROPRIETOR'S CERTIFICATE:

MICHIGAN NATIONAL BANK - OAKLAND, A MICHIGAN CORPORATION, DULY ORGANIZED AND EXISTING UNDER THE LAWS OF THE STATE OF MICHIGAN, BY PATRICIA J. GREY, ASSISTANT VICE PRESIDENT, AS PROPRIETOR CERTIFY THAT WE HAVE CAUSED THE LAND TO BE SURVEYED, DIVIDED AND MAPPED AND DEDICATED AS REPRESENTED ON THIS PLAT AND THAT  
; THAT THE PUBLIC UTILITY EASEMENTS ARE PRIVATE EASEMENTS AND THAT ALL OTHER EASEMENTS ARE FOR THE USES SHOWN ON THE PLAT, AND THAT LOTS 2 THRU 19 INCLUSIVE EXTEND TO THE WATERS EDGE OF UPPER LONG LAKE AS SHOWN ON THIS PLAT.

### WITNESS:

MICHIGAN NATIONAL BANK-OAKLAND  
A MICHIGAN CORPORATION  
24785 SOUTHFIELD ROAD  
SOUTHFIELD, MICHIGAN 48037  
Sherry M. Borosh  
Sherry M. Borosh  
Rosemary Burton  
ROSEMARY BURTON  
Patricia J. Grey  
PATRICIA J. GREY  
VICE PRESIDENT

### ACKNOWLEDGEMENT:

STATE OF MICHIGAN )  
OAKLAND COUNTY ) s.s.

PERSONALLY CAME BEFORE ME THIS 18th DAY OF SEPTEMBER, 1985, PATRICIA J. GREY, OF THE ABOVE NAMED CORPORATION, TO ME KNOWN TO BE THE PERSON WHO EXECUTED THE FOREGOING INSTRUMENT AND TO ME KNOWN TO BE SUCH ASSISTANT VICE PRESIDENT OF SAID CORPORATION, AND ACKNOWLEDGED THAT SHE EXECUTED THE FOREGOING INSTRUMENT AS SUCH OFFICER AS THE FREE ACT AND DEED OF SAID CORPORATION BY ITS AUTHORITY.

MY COMMISSION EXPIRES: 10-19-87

Cheryl W. Carney  
NOTARY PUBLIC, CHERYL W. CARNEY  
OAKLAND COUNTY, MICHIGAN

### COUNTY TREASURER'S CERTIFICATE:

THE RECORDS IN MY OFFICE SHOW NO UNPAID TAXES OR SPECIAL ASSESSMENTS FOR THE FIVE YEARS PRECEDING Sept 19, 1985 INVOLVING THE LANDS INCLUDED IN THIS PLAT.

C. Hugh Dohany, Treasurer  
C. HUGH DOHANY  
OAKLAND COUNTY TREASURER

### COUNTY DRAIN COMMISSION CERTIFICATE:

APPROVED ON SEPT. 19, 1985, AS COMPLYING WITH SECTION 192, OF ACT 288, P.A. 1967, AND THE APPLICABLE RULES AND REGULATIONS PUBLISHED BY MY OFFICE IN THE COUNTY OF OAKLAND.

George W. Kuhn  
GEORGE W. KUHN  
OAKLAND COUNTY DRAIN COMMISSIONER

### CERTIFICATE OF COUNTY ROAD COMMISSIONER:

APPROVED ON October 7, 1985, AS COMPLYING WITH SECTION 183, OF ACT 288, P.A. 1967, AND THE APPLICABLE PUBLISHED RULES AND REGULATIONS OF THE BOARD OF ROAD COMMISSIONERS OF OAKLAND COUNTY.

John R. Gnaus, Jr.  
JOHN R. GNAUS, JR.  
CHAIRMAN  
Richard V. Vogt  
RICHARD V. VOGT  
VICE - CHAIRMAN  
Fred D. Houghten  
FRED D. HOUGHTEN  
COMMISSIONER

### CERTIFICATE OF MUNICIPAL APPROVAL:

I CERTIFY THAT THIS PLAT WAS APPROVED BY THE TOWNSHIP BOARD OF TRUSTEES OF BLOOMFIELD TOWNSHIP, AT A MEETING HELD ON October 15, 1985, AND WAS REVIEWED AND FOUND TO BE IN COMPLIANCE WITH ACT 288, P.A. 1967, ALSO ADEQUATE SURETY HAS BEEN DEPOSITED WITH THE CLERK FOR THE PLACING OF MONUMENTS AND LOT MARKERS WITHIN A REASONABLE LENGTH OF TIME, NOT TO EXCEED ONE YEAR FROM THE ABOVE DATE, THAT SURETY HAS BEEN POSTED TO INSURE THE INSTALLATION OF PUBLIC SEWER AND PUBLIC WATER SERVICES.

Deloris V. Little  
DELORIS V. LITTLE, CLERK

### COUNTY PLAT BOARD CERTIFICATE:

THIS PLAT HAS BEEN REVIEWED AND IS APPROVED BY THE OAKLAND COUNTY PLAT BOARD OCTOBER 25, 1985, AS BEING IN COMPLIANCE WITH ALL OF THE PROVISIONS OF ACT 288, P.A. 1967, AND THE PLAT BOARD'S APPLICABLE RULES AND REGULATIONS.

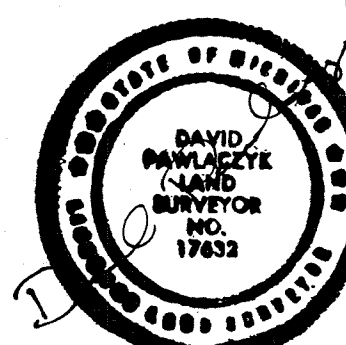
Richard R. Wilcox, Jr.  
RICHARD R. WILCOX, JR.  
CHAIRMAN OF BOARD OF COMMISSIONERS  
C. Hugh Dohany  
C. HUGH DOHANY  
COUNTY TREASURER  
Harry E. Braga  
HARRY E. BRAGA, R.L.S.  
COUNTY PLAT ENGINEER  
Lynn D. Allen  
LYNN D. ALLEN, COUNTY CLERK  
REGISTER OF DEEDS

### RECORDING CERTIFICATE:

STATE OF MICHIGAN )  
OAKLAND COUNTY ) s.s.

THIS PLAT WAS RECEIVED FOR RECORD ON THE 13TH DAY OF NOVEMBER A.D., 1985, AT 3:22 PM, RECORDED IN LIBER 186 OF PLATS, ON PAGES 27, 28, 29, 30, 31 & 32.

Lynn D. Allen  
LYNN D. ALLEN, COUNTY CLERK  
REGISTER OF DEEDS  
BY: Frank P. Skotzke  
FRANK P. SKOTZKE  
DEPUTY.



**GWE** Giffels-Webster Engineers, Inc.  
CONSULTING ENGINEERS, LAND SURVEYORS & PLANNERS  
2731 Adams Road • Pontiac, Michigan 48057  
Phone: 313/852-3100 or 313/258-2288  
ARIZONA FLORIDA MICHIGAN TEXAS

# HERON BAY SUBDIVISION

PART OF SECTION 7, T. 2 N., R. 10 E.,  
BLOOMFIELD TOWNSHIP, OAKLAND COUNTY, MICHIGAN

EXAMINED AND APPROVED  
Date: Nov 8, 1985  
BY THE DEPARTMENT  
OF COMMERCE  
*Richard E. Lomax*  
Richard E. Lomax, RLS  
Manager Plat Section

PROPRIETOR'S CERTIFICATE:

COHEN DEVELOPMENT CORPORATION, INC., A MICHIGAN CORPORATION, DULY ORGANIZED AND EXISTING UNDER THE LAWS OF THE STATE OF MICHIGAN, BY MAURICE COHEN, PRESIDENT, AS PROPRIETOR, CERTIFY THAT WE HAVE CAUSED THE LAND TO BE SURVEYED, DIVIDED, MAPPED AND DEDICATED AS REPRESENTED ON THIS PLAT, AND THAT HERON RIDGE DRIVE & BLUE HERON COURT ARE FOR THE PRIVATE USE OF THE LOT OWNERS OF THIS PLAT, AND THAT THE PUBLIC UTILITY EASEMENTS ARE PRIVATE EASEMENTS, AND THAT ALL OTHER EASEMENTS ARE FOR THE USES SHOWN ON THE PLAT; AND THAT LOTS 2 THRU 19 INCLUSIVE EXTEND TO THE WATERS EDGE OF UPPER LONG LAKE AS SHOWN ON THIS PLAT.

WITNESS:

COHEN DEVELOPMENT CORPORATION, INC.  
A MICHIGAN CORPORATION  
27700 NORTHWESTERN HIGHWAY  
SOUTHFIELD, MICHIGAN 48037

*Judith A. Sova*  
JUDITH A. SOVA

*Manny Kniahnycky*  
MANNY KNIAHNYCKY

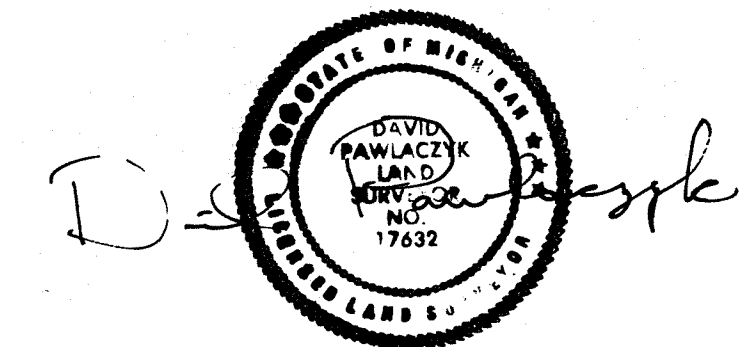
*Maurice Cohen*  
MAURICE COHEN  
PRESIDENT

ACKNOWLEDGEMENT:

STATE OF MICHIGAN )  
                                  ) S.S.  
OAKLAND COUNTY    )

PERSONALLY CAME BEFORE ME THIS 17<sup>th</sup> DAY OF September, 1985, MAURICE COHEN, OF THE ABOVE NAMED CORPORATION, TO ME KNOWN TO BE THE PERSON WHO EXECUTED THE FOREGOING INSTRUMENT AND TO ME KNOWN TO BE SUCH PRESIDENT, OF SAID CORPORATION, AND ACKNOWLEDGED THAT HE EXECUTED THE FOREGOING INSTRUMENT AS SUCH OFFICER AS HIS FREE ACT AND DEED OF SAID CORPORATION BY ITS AUTHORITY.

MY COMMISSION EXPIRES: 2/24/88 *Elise Goldman*  
NOTARY PUBLIC, ELISE GOLDMAN  
OAKLAND COUNTY, MICHIGAN



**GWE** Giffels-Webster Engineers, Inc.  
CONSULTING ENGINEERS, LAND SURVEYORS & PLANNERS  
2731 Adams Road • Pontiac, Michigan 48067  
Phone: 313/862-3100 or 313/865-1206  
FLORIDA    MICHIGAN    TEXAS